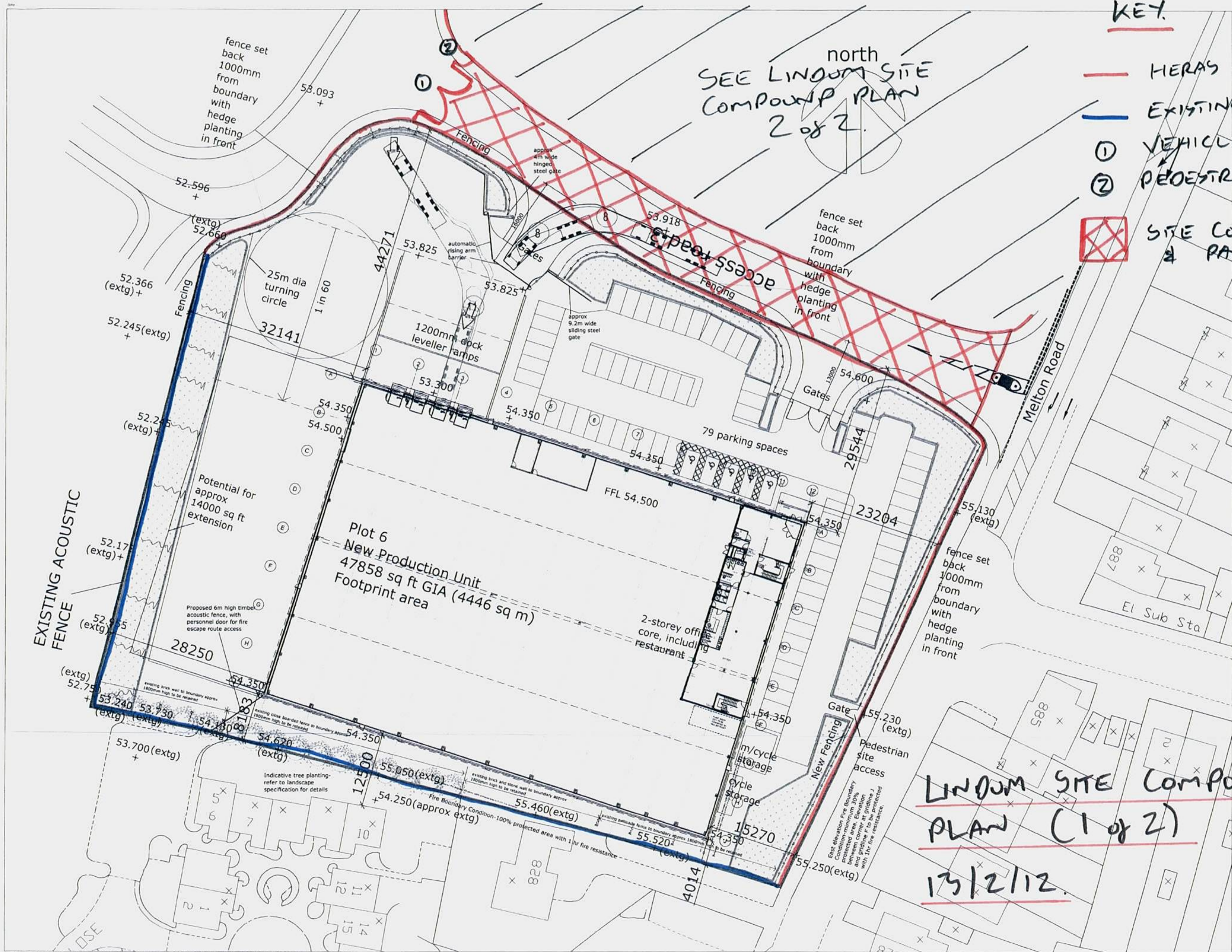


KEY

- HERAS FENCING.
- EXISTING BOUNDARY
- ① VEHICLE ACCESS.
- ② PEDESTRIAN ACCESS.
- X SITE COMPOUND & PARKING.



SEE LINDUM SITE  
COMPOUND PLAN  
2 of 2.

LINDUM SITE COMPOUND  
PLAN (1 of 2)  
13/2/12

AMENDMENTS  
A-14-11-2011 2011 fire boundary conditions added  
B-23-11-2011 Building repositioned to move away from houses on Old Mill Class. Finished floor level lowered by 300mm from 54.800 to 54.500. consequential levels to service yard and parking area amended. Tree planting added to southern boundary. Fence set back from front boundary with hedge planting in front of fence. Site enlarged at north west corner over area of electricity substation which is to be removed.  
C-02-12-2011 rising arm barriers added to service yard entrance to allow 18.5m articulated vehicles to move off cartway. Gates to car park moved 13m from cartway.  
D-07-12-2011 rising arm barriers amended  
E-12-12-2011 Perimeter fence to access roads set back approx 1 metre from back of pavement. Hedge planting between fence and back of pavement.



STEPHEN GEORGE & PARTNERS LLP

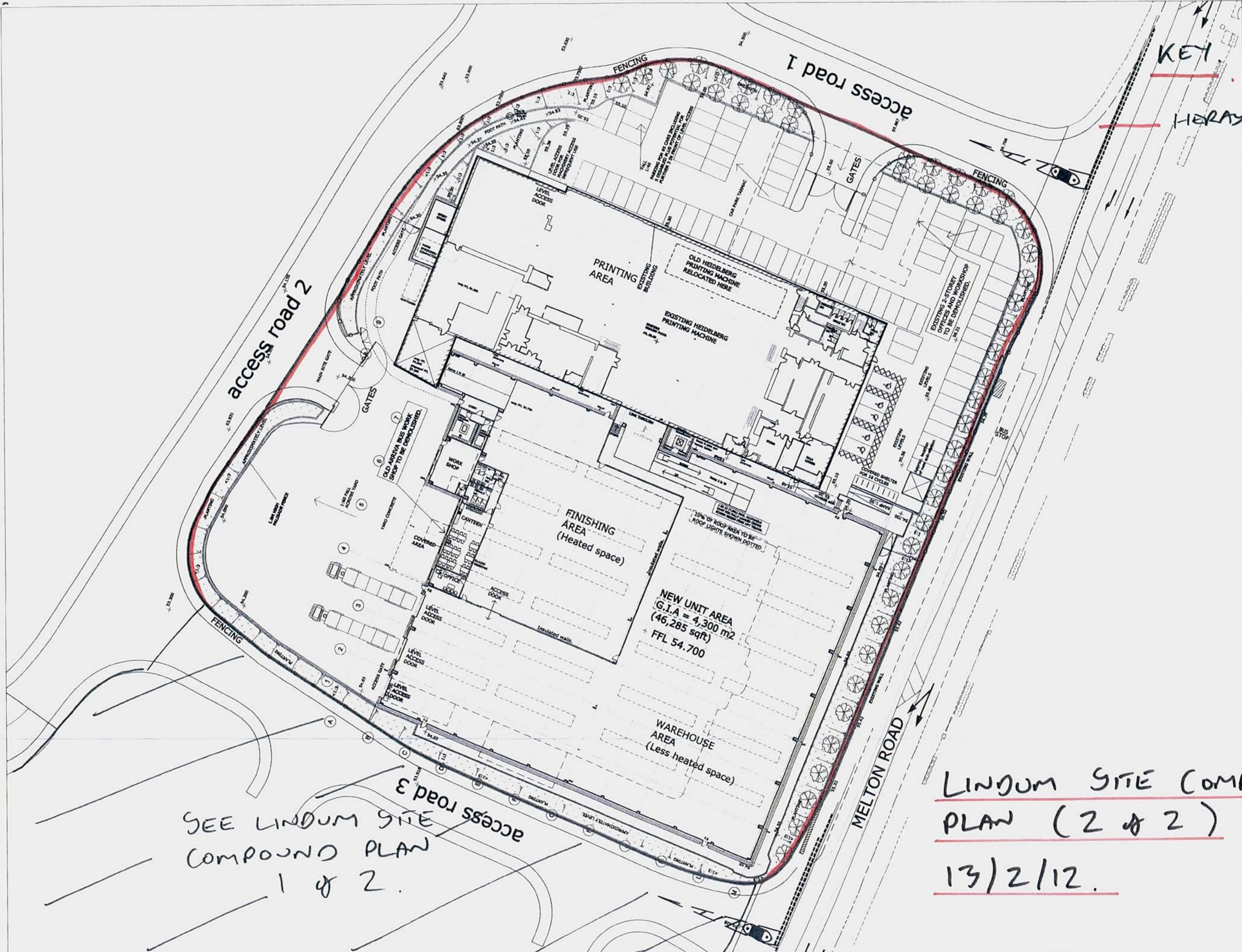
170 London Road  
Lutterworth LE17 3AD  
N. 0153 241 800 F. 0153 241 1001  
www.stephengeorge.co.uk

Melton Road Industrial estate  
Thurmaston  
Advance Tapes Plot 6  
Site Layout

Drawing title: Planning  
Call reference: 0153-05-93 proposed rev  
Drawn: AJ  
Team: JM  
Date: 23/11/2011  
Scale: 1:500 @ A4

Project no: 0134-063  
Drawn by: 91  
Rev: E





SEE LINDUM SITE COMPOUND PLAN 1 of 2.

LINDUM SITE COMPOUND  
PLAN (2 of 2)  
13/2/12.

**CSB**  
 CONSULTANTS  
 ARCHITECTS | INTERIORS

**STEPHEN GEORGE & PARTNERS LLP**  
 178 London Road  
 Luton LU2 1NF  
 N 0116 247 8887 F 0116 354 1205  
 www.stephengeorge.co.uk

Melton Road Industrial Estate  
 Thurmaston  
 Quilvis Print and Packaging- plot 5  
 Site Plan

Drawing name:	Plot 5
Client reference:	8134-004-91200-Plan 200
Drawn:	AJ
Team:	24
Date:	05/12/2011
Scale:	1:1000@A3

Project no:	Dwg no:	Rev:
8134-004	91	